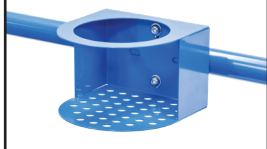


Mesh Cage Trolley with Lockable Double Swing Mesh Doors & Lockable Lid

- This trolley can be used to transport items such as tools, equipment, or supplies across a range of industries
- The trolley can be used in hotels, restaurants & other hospitality settings to transport food, beverages, or cleaning supplies.
- Lockable Double Swing Door (180 degree opening)
- 125mm Rubber Castors: 2 Fixed, 2 Swivel with brakes
- Optional 200mm Flat Free Wheel Kit with Floor Lock
- Load Capacity: 300kg
- Overall Dimensions (LxWxH): 1095x660x1050mm (Includes Handle)
- Internal Dimensions (LxWxH): 910x605x670mm
- Handle Height: 1050mm
- Base Height: 184mm
- Mesh Size: 50x50mm
- Unit Weight: 50kg

V1865
Ladder
Handle

V1869
Mesh Shelf

V1840
Drink Holder

V1841
Clipboard Holder

V1842
Laptop Holder

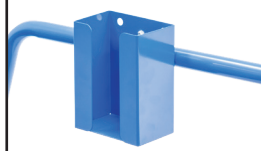
V1843
Mesh Basket

V1844
Accessory Shelf

V1845
Flat Free Wheel Kit

V1846
Floor Lock Brake

V1848
A4 Pocket

V1849 Scanner
Holder

V1868
Extra Handle

Code
Details

V1892	Mesh Cage Trolley with Lockable Double Swing Mesh Doors & Lockable Lid
V1840	Drink Holder Attachment
V1841	Clipboard Holder Attachment
V1842	Laptop Holder Attachment
V1843	Mesh Basket Accessory
V1844	Accessory Shelf Attachment
V1868	Optional Extra Handle
V1845	Flat Free Wheel Kit
V1846	Floor Lock Brake
V1848	A4 Pocket Attachment
V1849	Scanner Holder Attachment
V1869	Mesh Shelf
V1865	Ladder Handle Attachment

Visit www.verdex.com.au for more images and details