

Forklift Extension Slippers (Zinc Plated)

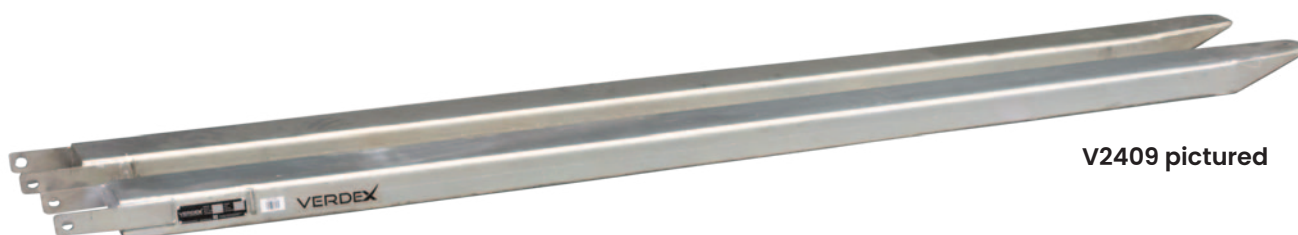
Verdex Equipment's Fork Extension Slippers/ Tines have been designed with a slim profile to extend the flexibility of forklifts. Our Fork Extension Slippers/ Tines extend the versatility of the fork truck.

The safe working load (SWL) is measured per pair at 600mm load centre.

These slim profile slippers have been designed and manufactured in accordance with AS2359.15 which requires the slippers used for general usage to be not longer than 167% of the supporting tine's length.

- Fork slippers extend the versatility of your lift truck
- The *SWL shown here is the maximum, however it varies depending on forklift capacity
- Zinc Plated Finish
- Slippers conform to AS2359.15
- Load Centre: 600mm

V2406 pictured



V2409 pictured

Code	SWL (kg)	Internal Slipper Size (mm)	External Slipper Size (mm)	HCG (mm)	Length (mm)	Weight Per Pair (kg)
V2405	4500	138x55	150x67	854	1780	66
V2406	4500	138x55	150x67	1154	2400	88
V2407	8500	170x76	185x92	540	1800	133
V2408	8500	170x76	185x92	1154	2400	177
V2409	8500	170x76	185x92	1454	3000	221